



RIG # 801

1,800 HP Triple Mast Drilling Rig

SUBSTRUCTURE

Swing Up - 3 piece Center Section with Rig Runner™ integrated walking System
 Floor Height: 31'-0"
 Clear Height (beneath rotary beams): 27'-0" Rotary Capacity: 850,000 lbs
 Max Pipe Setback: 750,000 lbs
Note: All floor heights are based on the substructure sitting on 6" mats

MAST

142' Triple Mast – Designed to meet API 4F 4th Edition
 500 Ton Top Drive Integrated into Center Section for Transport
 Static Hook Load (12 Lines): 850,000 lbs Drill Line: 1-3/8"
 Racking Capacity: 30,000' of 5" DP; 27,250' of 5 1/2" DP

DRAWWORKS

IDS 1800 AC gear-driven 880,000 lbs w/ 12 lines
 Rated Power: 1,800 hp continuous; 2,250 hp intermittent
 Input Power: 1,800 hp AC Traction motor
 Lebus Drum Groove: 1-3/8"
 Parking / Emergency Brake: Wichita 336 SSB
 Fail-safe, spring-set brake

TOP DRIVE

Bentec TD-500-XT AC 500 Ton
 Max Speed: 220 rpm; Hoist Capacity: 1,000,000 lbs
 Continuous Drill Torque: 52,000 ft-lb
 Torque Capacity: 75,000 ft-lb
 Drill Pipe Range: 2-1/2" to 8-1/2"

FLOOR TOOLS

-Iron Roughneck
 Bentec IR-100-8-B
 Diameter Range: 2-7/8" to 9-3/4"
 Maximum Make-Up Torque: 100,000 ft-lbs
 Maximum Break-Out Torque: 120,000 ft-lbs
 -Rotary Table
 National Type 375, 37-1/2" Dia Opening; Static Hookload 650 Tons
 Hydraulic drive for positioning tools only; Max Speed: 20 rpm

POWER SYSTEM

Four Kato 1,225 kW @ 1,200 rpm with Caterpillar 3512C 1,476 hp
 Sound attenuated buildings for low noise compliance areas

DRIVE HOUSE

IDS Twin Vertical A/C units MCC Step-Up Transformer Generator Bays; Self-syncing generator controls

DRILLER CABIN

IDS Controls: Four HMI touch screen / Joystick console panels
 Programmed HMI for directional tool face
 On-board monitoring of instrumentation, engines and on-site alarm

MUD PUMPS (THREE)

RS-F1600 Triplex Rated Power: 1600 hp
 Stroke: 12"
 Input Power: 1500 hp AC traction motor
 Pressure Rating: 7500 psi

MUD TANKS

Two Covered Tanks w/ 876 bbls Total Active Volume
 Two MI SWACO Mongoose Dual Motion PRO series Shale Shakers
 Mud Gas Separator: MI Swaco SMGS 6' OD x 22.3' tall

SCALPING TANK

Active Volume: 280 bbls
 Three MI SWACO Mongoose Dual Motion PRO series Shale Shakers
 Trip Tank 80 bbls Capacity

MUD SYSTEM

7500 psi Max Pressure
 5" Main plumbing and standpipe

BOP (NACE)

As Required by Contract
 BOP Handling System-50 Tons; BOP transport skid w/ hyd actuated stand

MANIFOLD

4-1/16" x 10,000 psi Manual Gate Valves, Hydraulic Choke, HCR Valve, Check Valve

ACCUMULATOR

Meyer 6 station: 400-gallon tank; Class 1 Division 1 rating
 2 button operated safety system to open or close c/w N2 Backup & electric triplex pump

CATWALK

North Rig C26 Hydraulic Catwalk w/ Skate and elevating trough
 Tubular max length: 45 feet Range III; Max OD: 20"; Max Weight: 10,000 lbs; Max Pipe Rack Load: 30,000 lbs; Cycle Time: 42 sec.

TUBULARS

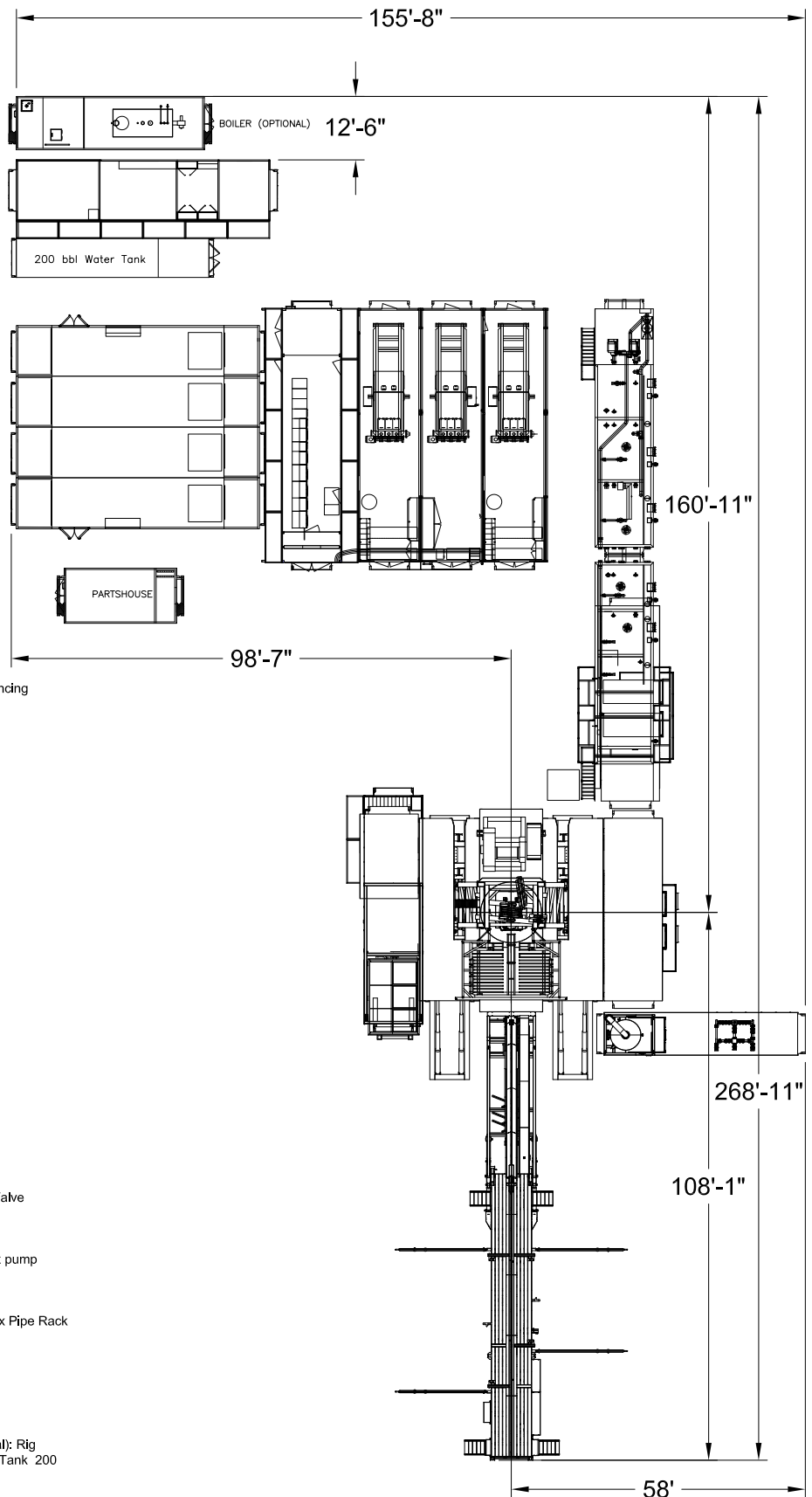
Drill Pipe: Supplied as needed, per availability
 Drill Collars & heavywate: Supplied as needed, per availability

MISC.

Rig Floor Tool House / Lubester; Parts House, HPU; Boiler - one 125 hp (Optional); Rig Manager Trailer - One 14' x 44' Skid mounted Fuel Tank - 10,500 Gallons Water Tank 200 bbls Tank with dual 10 hp water pumps

MOVING SYSTEM:

Hydraulic stomper style X-Y moving system with rams and integrated jacking pads.
 ReelRig® Twin Reel Cable System with 250 ft of cable Twin lines lay in linebackers on the ground, no overhead bulk wiring.



Standard inventory represents the typical rig configuration and inventory available. Optional items are not included in the standard inventory and are available upon request, as mutually agreed upon.

All ratings quoted herein are manufacturer specifications. AKITA's normal operating parameters are 90% of manufacturer mast ratings and 80% of mud pump manufacturer pressure rating. Operation of rig equipment beyond these parameters requires approval from AKITA field office management.