

# RIG # 803

## 1,800 HP Triple Mast Drilling Rig

### SUBSTRUCTURE

Swing Up - 3 piece Center Section with Rig Runner™ integrated walking System  
 Floor Height: 31'-0"  
 Clear Height (beneath rotary beams): 27'-0" Rotary Capacity: 850,000 lbs  
 Max Pipe Setback: 750,000 lbs  
*Note: All floor heights are based on the substructure sitting on 6" mats*

### MAST

142' Triple Mast – Designed to meet API 4F 4th Edition  
 500 Ton Top Drive Integrated into Center Section for Transport  
 Static Hook Load (12 Lines): 850,000 lbs Drill Line: 1-3/8"  
 Racking Capacity: 30,000' of 5" DP; 27,250' of 5 1/2" DP

### DRAWWORKS

IDS 1800 AC gear-driven 880,000 lbs w/ 12 lines  
 Rated Power: 1,800 hp continuous; 2,250 hp intermittent  
 Input Power: 1,800 hp AC Traction motor  
 Lebus Drum Groove: 1-3/8"  
 Parking / Emergency Brake: Wichita 336 SSB  
 Fail-safe, spring-set brake

### TOP DRIVE

Bentec TD-500-XT AC 500 Ton  
 Max Speed: 220 rpm; Hoist Capacity: 1,000,000 lbs  
 Continuous Drill Torque: 52,000 ft-lb  
 Torque Capacity: 75,000 ft-lb  
 Drill Pipe Range: 2-1/2" to 8-1/2"

### FLOOR TOOLS

-Iron Roughneck  
 Diameter Range: 3-1/2" to 9-3/4"  
 Maximum Make-Up Torque: 100,000 ft-lbs  
 Maximum Break-Out Torque: 120,000 ft-lbs  
 -Rotary Table  
 National Type 375, 37-1/2" Dia Opening; Static Hookload 650 Tons  
 Hydraulic drive for positioning tools only; Max Speed: 20 rpm

### POWER SYSTEM

Four Kato 1,225 kW @ 1,200 rpm with Caterpillar 3512E 1,476 hp  
 Sound attenuated buildings for low noise compliance areas

### DRIVE HOUSE

IDS Twin Vertical A/C units MCC Step-Up Transformer Generator Bays; Self-syncing generator controls

### DRILLER CABIN

IDS Controls: Four HMI touch screen / Joystick console panels  
 Programmed HMI for directional tool face  
 On-board monitoring of instrumentation, engines and on-site alarm

### MUD PUMPS (THREE)

RS-F1600 Triplex Rated Power: 1600 hp  
 Stroke: 12"  
 Input Power: 1500 hp AC traction motor  
 Pressure Rating: 7500 psi

### MUD TANKS

Two Covered Tanks w/ 876 bbls Total Active Volume  
 Two MI SWACO Mongoose Dual Motion PRO series Shale Shakers  
 Mud Gas Separator: MI Swaco SMGS 6' OD x 22.3' tall

### SCALPING TANK

Active Volume: 280 bbls  
 Three Derrick Hyperpool Shale Shakers  
 Trip Tank 80 bbls Capacity

### MUD SYSTEM

7500 psi Max Pressure  
 5" Main plumbing and standpipe

### BOP (NACE)

As Required by Contract  
 BOP Handling System-50 Tons; BOP transport skid w/ hyd actuated stand

### MANIFOLD

4-1/16" x 10,000 psi Manual Gate Valves, Hydraulic Choke, HCR Valve, Check Valve

### ACCUMULATOR

Meyer 6 station: 400-gallon tank; Class 1 Division 1 rating  
 2 button operated safety system to open or close c/w N2 Backup & electric triplex pump

### CATWALK

North Rig C26 Hydraulic Catwalk w/ Skate and elevating trough  
 Tubular max length: 45 feet Range III; Max OD: 20"; Max Weight: 10,000 lbs; Max Pipe Rack Load: 30,000 lbs; Cycle Time: 42 sec.

### TUBULARS

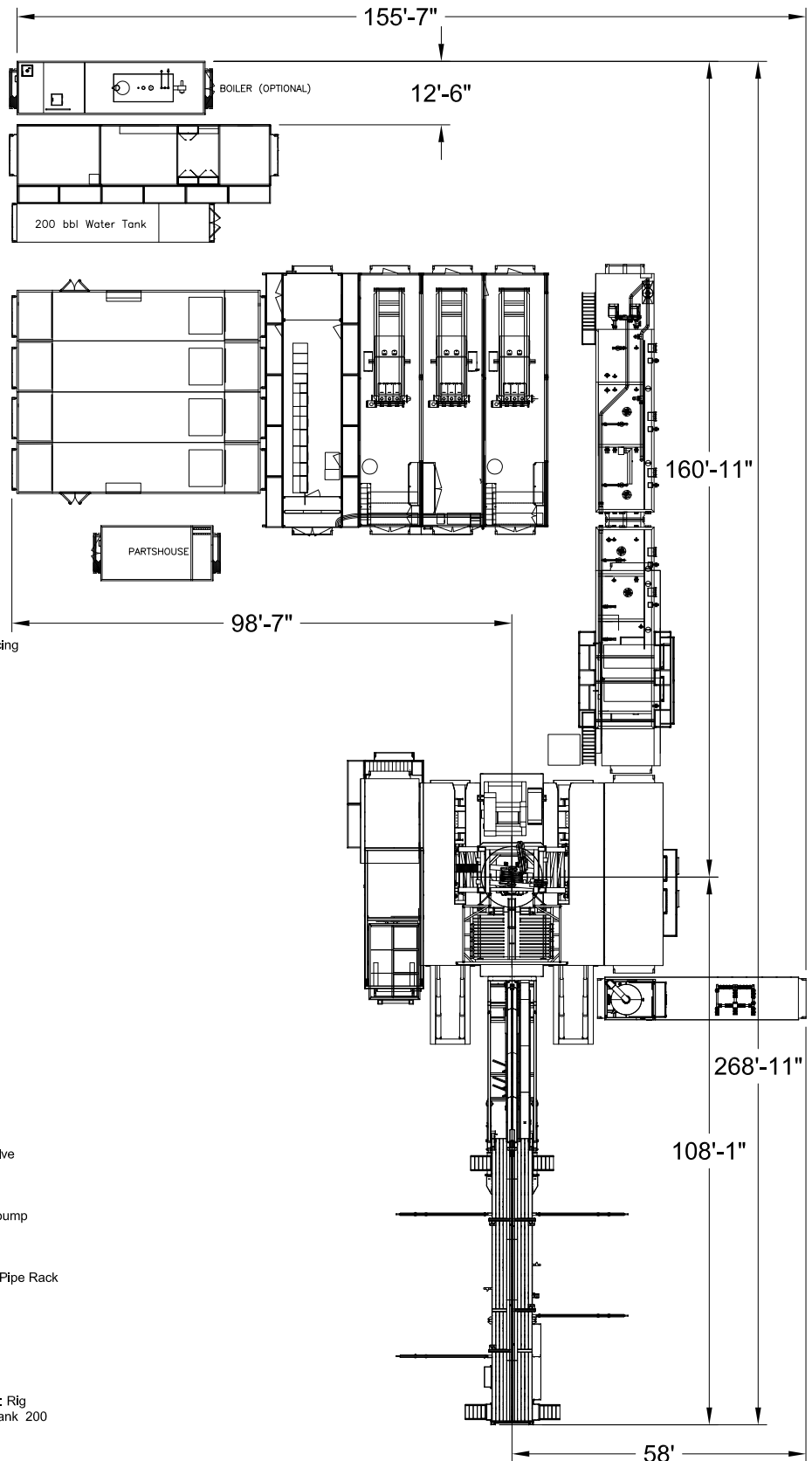
Drill Pipe: Supplied as needed, per availability  
 Drill Collars & heavywate: Supplied as needed, per availability

### MISC.

Rig Floor Tool House / Lubester; Parts House, HPU; Boiler - one 125 hp (Optional); Rig Manager Trailer - One 14' x 44' Skid mounted Fuel Tank - 10,500 Gallons Water Tank 200 bbls Tank with dual 10 hp water pumps

### MOVING SYSTEM:

Hydraulic stomper style X-Y moving system with rams and integrated jacking pads.  
 ReelRig® Twin Reel Cable System with 250 ft of cable Twin lines lay in linebackers on the ground, no overhead bulk wiring.



Standard inventory represents the typical rig configuration and inventory available. Optional items are not included in the standard inventory and are available upon request, as mutually agreed upon.

All ratings quoted herein are manufacturer specifications. AKITA's normal operating parameters are 90% of manufacturer mast ratings and 80% of mud pump manufacturer pressure rating. Operation of rig equipment beyond these parameters requires approval from AKITA field office management.